



Self-Leveling Underlayment: Applied over Metal Framings

LEVELROCK Brand CSD (Corrugated Steel Deck) floor underlayment is a new self-leveling cement underlayment that is designed for use in buildings with light-gauge steel frame construction. It is the first poured underlayment that can be applied over metal framing systems or corrugated steel decks, says the maker. The underlayment features a proprietary gypsum-based concrete formulation that offers high compressive strengths, but is up to 55% lighter than 3-in. concrete. **United States Gypsum Co., Industrial Products Division; 800/487-4431; www.levelrock.com**



SAFETY EARMUFF: With Audio Input

This electronic noise-canceling safety earmuff is suitable for the light construction industry. The NoiseBuster ENC provides complete protection from low-frequency noise generated by engines, motors and fans. It also features an audio input capability so that a user can hear music from portable devices while working. Noise reduction rating is 26dB when worn over-the-head and 25dB when worn behind-the-head.

Pro Tech Communications Inc.; 203/226-4447; www.protechcom.com



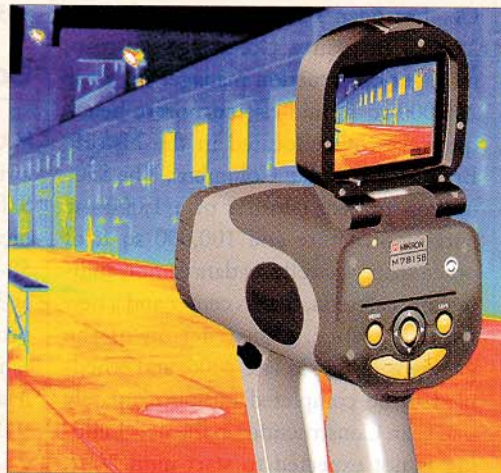
METAL CONNECTOR NAILER: Hard-To-Reach Areas

Designed for use in tight spaces and hard-to-reach areas, the new MCN150 metal connector nailer's lightweight, compact design allows a contractor to navigate around and between obstacles nimbly while performing overhead applications without pause. The tool is less than 10.5-in. tall and fits easily between boards placed 12 in. on center. Its in-line magazine fits into 90° angled corners for added maneuverability. It also features a precision trip mechanism for exact placement of the nail into metal connector holes. **BOSTITCH, subsidiary of The Stanley Works; 401/884-2500; www.bostitch.com**



Building Inspection Camera: Detects Invisible Problems

The new 7815B infrared camera is like an x-ray machine for building diagnostics. It combines the highest-resolution microbolometer camera in the industry with a visible light camera and laser target dot to make professional thermal imaging point-and-shoot simple. It can detect air infiltration, moisture intrusion, mold and other problems. When used with the R-value calculation Thermal-Spection software, it makes it easy to produce clear professional reports, even calculating heat losses and current R-values of walls, doors and more. **Mikron Infrared Inc.; 888/506-3900; www.mikroninfrared.com**



For more info

Select the product information you want and contact the manufacturer at either the Website or phone number provided.